



# Travel Solutions

## *Roof Box Product Guide 2017*



Equip roof boxes conveniently increase your vehicles volume capacity when required. All roof boxes within the range are easy to fit and can be applied to the majority of passenger vehicles. Available in a range of sizes and styles making them the perfect storage solution when travelling in the car.

## Firenze Range Available in: ▶

Part No.	AIR435	AIR505
Size	430 Ltr.	500 Ltr.

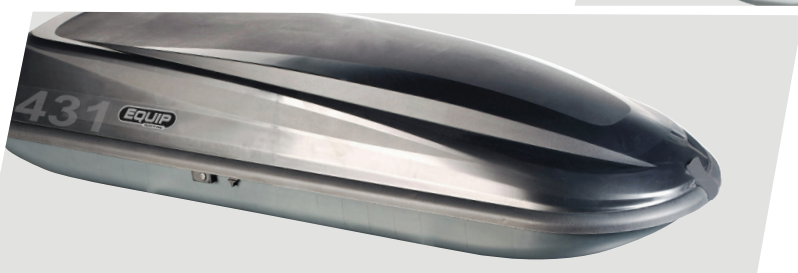
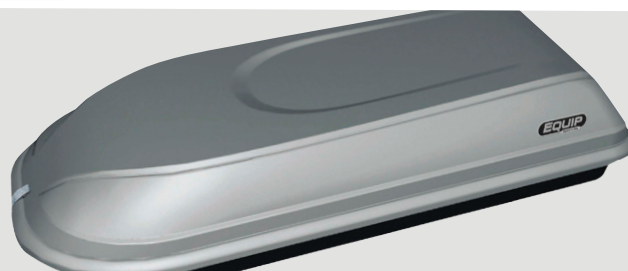


## ▶ Torino Range Available in:

Part No.	DYN434
Size	430 Ltr.

## Milano Range Available in: ▶

Part No.	CLA320	CLA430
Size	320 Ltr.	430 Ltr.

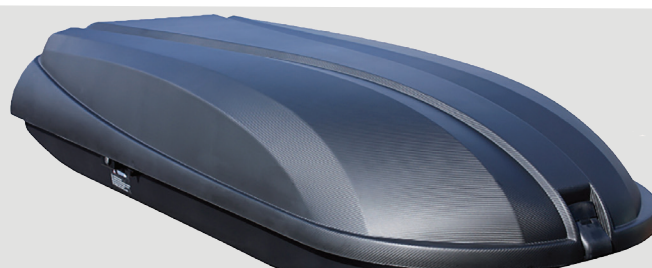


## ▶ Monza Range Available in:

Part No.	SP0431
Size	430 Ltr.

## Elite Range Available in: ▶

Part No.	ELI437
Size	430 Ltr.



## ▶ Lyon Range Available in:

Part No.	CAM370
Size	370 Ltr.



- ▶ Range available in sizes between 320-500 Litres.
- ▶ Designed with the most advanced CAD technology, Equip car roof boxes can be considered as a real revolution in their field.
- ▶ Unique injection moulding process allows the thickness to be constant, thus adding more strength to the product.
- ▶ No rivets on the outside preventing water penetration as well as being aesthetically pleasing.
- ▶ Flat bottom, which helps reduce aerodynamic noises whilst moving.
- ▶ Bottom has internal fins to prevent the luggage from sliding.



	Firenze		Torino	Monza	Milano		Lyon	Elite
<b>PART NO:</b>	AIR435	AIR505	DYN434	SPO431	CLA320	CLA430	CAM370	ELI437
<b>Capacity</b>	430Ltr	500Ltr	430Ltr	430Ltr	320Ltr	430Ltr	370Ltr	430Ltr
<b>External size cm</b>	180x78x38	225x78x38	180x78x37	180x78x39	132x78x37	180x78x37	132x78x43	180x78x38
<b>Internal size cm</b>	171x73	216x73	171x73	171x73	124x71	171x73	124x71	171x73
<b>Weight</b>	14	21	14	14	11	14	14	14
<b>Loading Kgs</b>	50	50	50	50	50	50	50	50
<b>Hinges</b>	3	3	3	3	2	3	2	3
<b>Lateral side opening</b>	•	•	•	•	•	•	•	•
<b>Dual side opening</b>	□	□	□	□	□	□	□	□
<b>Central lock system</b>	•	•	•	•	•	•	•	•
<b>Spring driven</b>	•	•	•	•	•	•	•	•
<b>Front safety hook</b>	•	•	•	•	•	•	N/A	•
<b>Pre-perforation</b>	•	•	•	•	•	•	•	•
<b>Fixation STRD</b>	□	□	□	□	•	•	□	□
<b>Fixation adjustable</b>	•	•	•	•	•	•	•	•
<b>Quick mount</b>	•	•	•	•	□	□	•	•
<b>Bottom material</b>	PP Copo		PP Copo	PP Copo	PP Copo		PP Copo	PP Copo
<b>Bottom production</b>	Injection moulding		Injection moulding	Injection moulding	Injection moulding		Injection moulding	Injection moulding
<b>Bottom colour</b>	Anthracite		Anthracite	Anthracite	Anthracite		Anthracite	Anthracite
<b>Lid material</b>	ABS		ABS	PP Copo	PP Copo		ABS	PP Copo
<b>Lid production</b>	Vacuum forming		Vacuum forming	Injection moulding	Injection moulding		Vacuum forming	Injection moulding
<b>Lid colour</b>	Black metallic		Grey metallic	Dark grey	Light grey		Black	Black
<b>Surface finishing</b>	Glossy		Glossy	Glossy and partially	Glossy and partially mat		Glossy	Carbon
<b>TUV homologation</b>	Yes		Yes	Yes	Yes			Yes

Legend:

• Inclusion

□ Optional

N/A Not available



**Equip: Bury, England, UK BL9 7NY. CUSTOMER HELPLINE: Tel No: +44 (0) 161 764 5981**  
**Equip is a registered brand of Tetrosyl Ltd. [www.tetrosyl.com](http://www.tetrosyl.com)**



**Tetrosyl**